

# Planting Scheme

## Wooded Perennial:

S1: *Ambrosia deltoidea* (17)



S2: *Calliandra eriophylla* (18)



S3: *Encelia farinosa* (1)



S4: *Ericameria laricifolia* (8)



S5: *Justicia californica* (5)



S6: *Larrea tridentata* (5)



## Trees:

T1: *Prosopis hybrid phoenix* (5)



T2: *Ungnadia speciosa* (5)



## Accent Specimens:

A1: *Asclepias subulata* (12)



A2: *Ferizachus wisizenii* (5)



A3: *Opuntia basilaris* (5)



A4: *Yucca baccata* (14)



A5: *Yucca pallida* (22)



## New cacti

(N2-6 forma cristata/monstrose)

N1: *Opuntia ramosissima* (2)



N2: *Myrtillocactus geometrizans* (2)



N3: *Myrtillocactus geometrizans* (1)



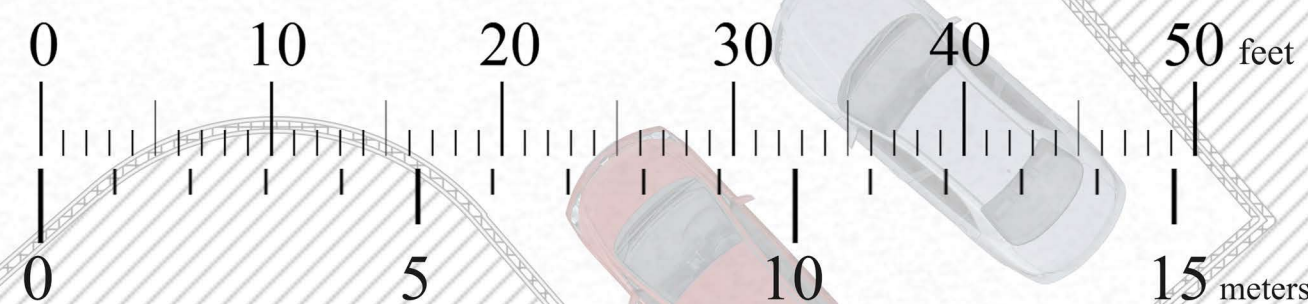
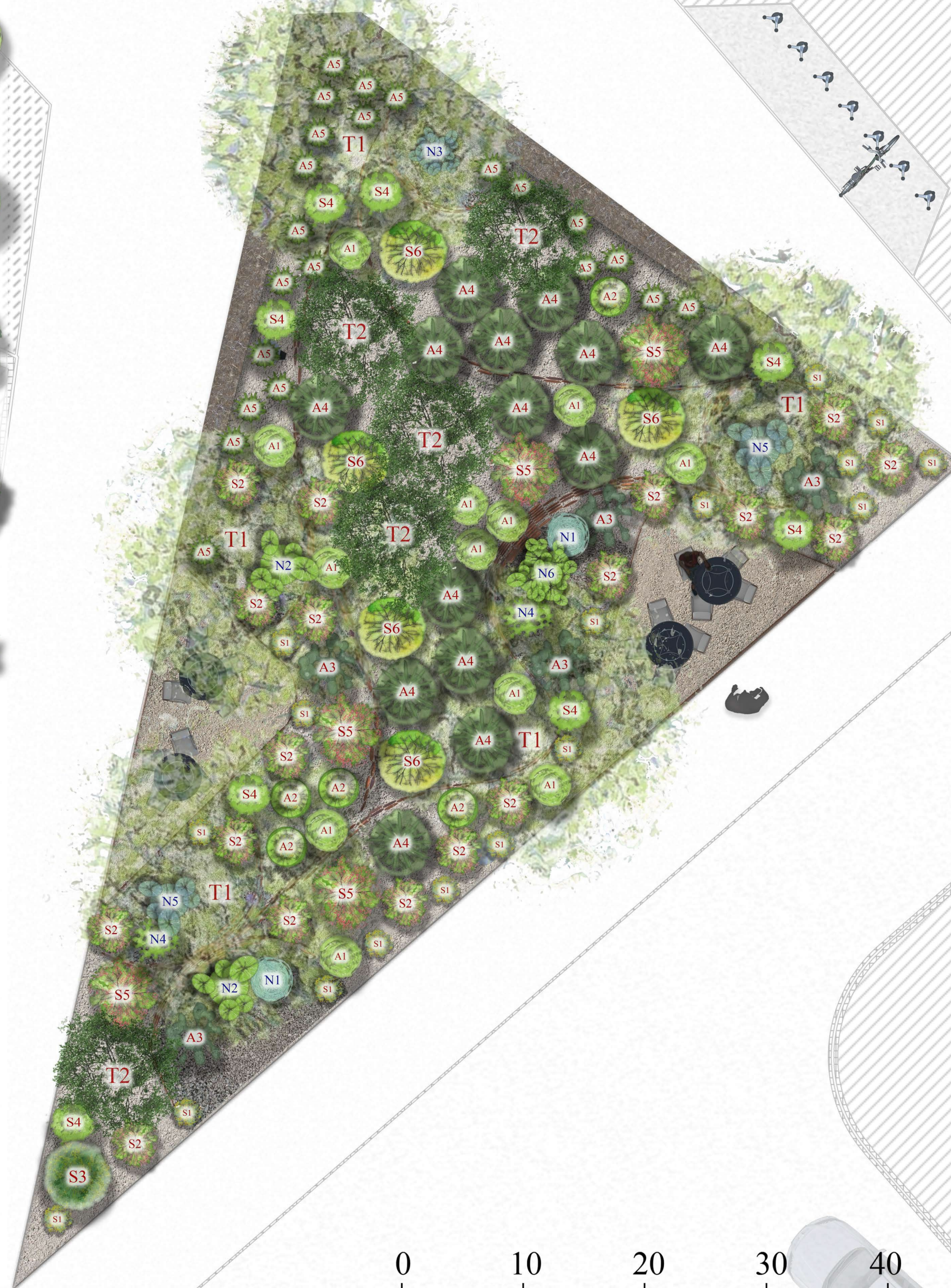
N4: *Opuntia microdasys* (2)



N5: *Myrtillocactus geometrizans* (2)



N6: *Euphorbia ledienii* (1)



Drawing name	Planting Scheme
Drawing no.	CG-572.1-3.1
Scale	1":20" at A3
Garden name	This Beautiful Monster
Recipient	A.S.U.
Designer	Caspian Robertson
Date	16th February 2018

